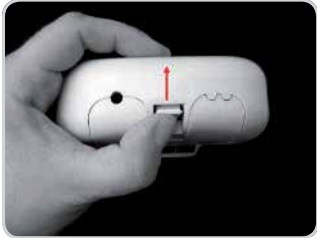


1 How To Open StationBox® Mikro

STEP 1 Open the Bottom Cover

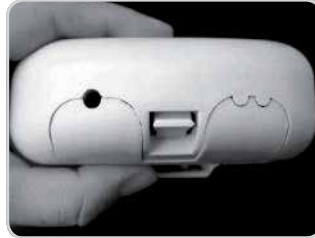


Release the lock.

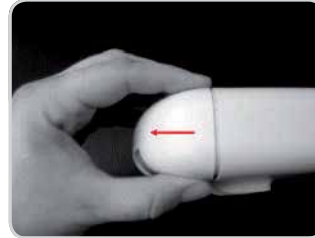
Release the lock using thumb, check if the lock stays in released position.



Lock is released.

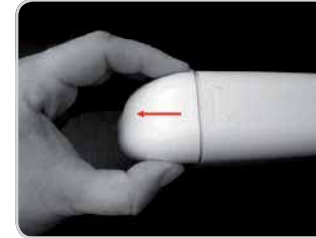


Lock is locked.

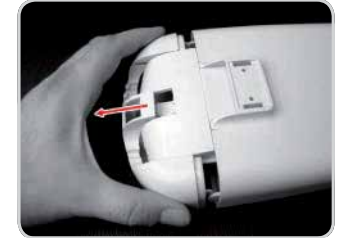


Release one side.

Slightly release one side of the bottom cover, then another side. Remove the cover.



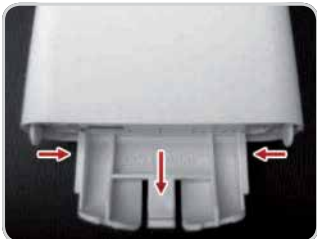
Release another side.



Release the bottom cover.

Good grip is very helpful - dry hands will make the operation way easier.

STEP 2 Release the Base panel



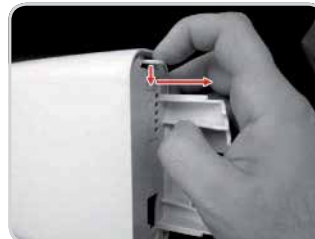
How it works?

To perform this step, both side-locks of Auto-Lock system should be released prior to pulling the Base Panel out of the Top Cover.

There are two tricks how to do it:

A. Left-Right Way

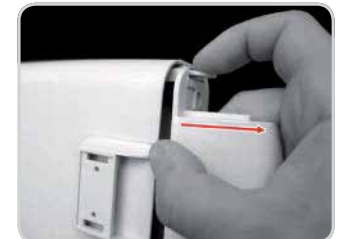
Press the lock on one side of the box and slightly pull out the Base Panel so the lock does not lock again and stays unlocked even when you release your hand. Press the lock on the another side and pull the Base panel out completely.



Release one side-lock.



Release another side-lock.



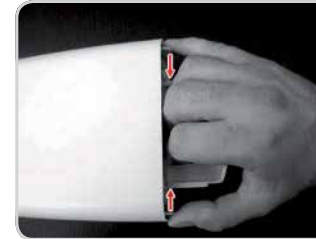
Pull out the Base Panel.

B. „Aloha“ :) Way

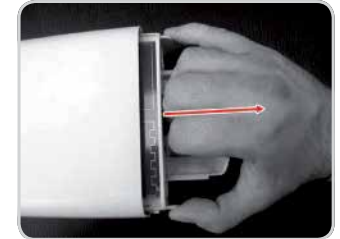
You can do the same in one step using only one hand. This is very useful when outdoor, on the roof, ladder etc. Grip the base panel with middle three fingers of your hand. While pushing the thumb and pinky to release both side locks, pull out the Base Panel.



Grip the Base Panel.



Push.



Pull out the Base Panel.

Make sure you say „Aloha“ :)
Practice – soon, you will be able to do the trick in a second.

2 Board Installation

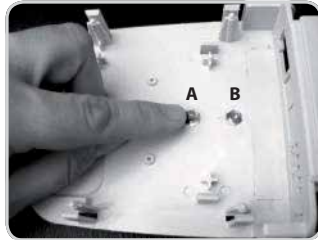
How To Insert the Board

Remove all transport protecting tapes and similar items from the board. First check the setup of ports on your board. If you need to open some of premolded positions on the Base Panel, please do so prior to inserting the board. Connect the pigtail(s). Antenna side are both MMCX. Setup of ports:

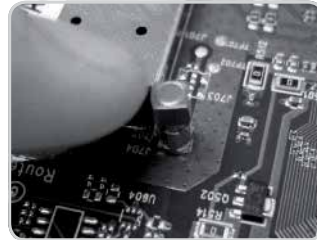
5GHz version

Port A – Vertical Polarization

Port B – Horizontal Polarization

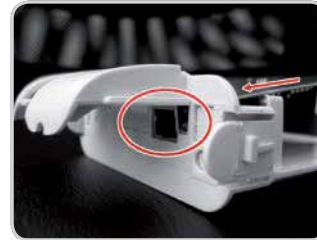


Connect the pigtails to antenna.



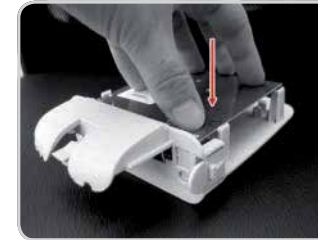
Connect the pigtails to the board/radio.

Connect the opposite side of the pigtail(s) to the radio/board connectors.



Line up the Ports in the openings.

Insert the board. First line up the ports, then snap the board in the position.

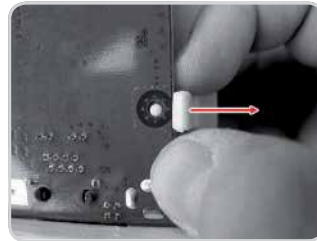


Snap the Board to the position.

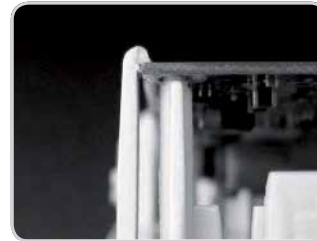


Board lock too tough.

In case the board locks (close to each of positioning pins) are too tough, no need for bigger hammer. Gently release the side locks with your fingers so board sits to the pre molded position smoothly.



Release the side locks.

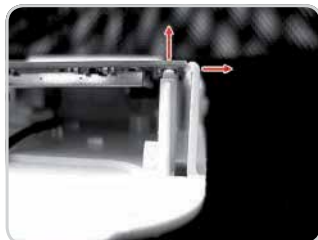


Board locked OK.

Also make sure you mind the pigtails path is free in space between the Board and the Base Panel.

How To Release the Board

First release rear side locks which are holding board on the pins using your fingers and lift the board from the position. Release front side locks and by lifting board release the board from the Base Panel. Disconnect the pigtail(s).



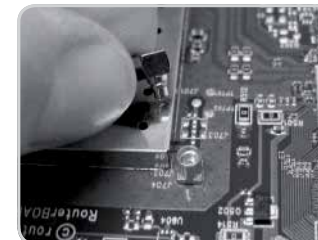
Release the rear position.



Release the front position.



Lift the board.



Disconnect pigtails from the Board.



Disconnect Pigtails from the Antenna. Done :)

3 How To Close the StationBox® Mikro

STEP 1 Insert the Base Panel



Insert the Base Panel

Insert the Base Panel to the Top Cover and push it. You should hear loud, "click!" sound.

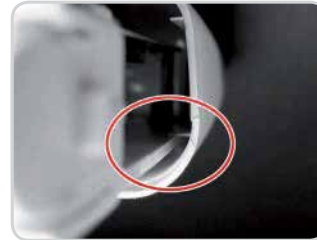


Lock.



Correct fit.

When inserting the Base Panel, make sure it fits correctly between the sliding rails premolded in the interior of Top Cover.

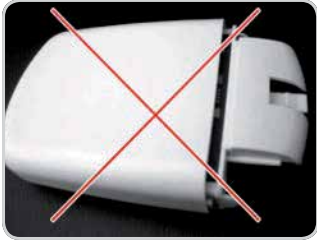


Incorrect fit.



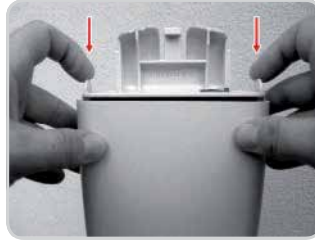
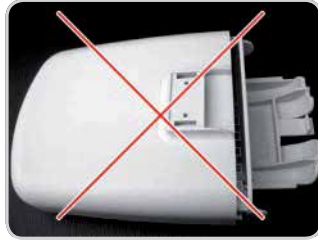
Correct setup.

Make sure you direct antenna to the front of the StationBox Mikro.



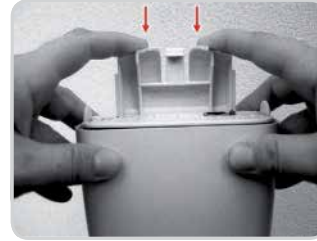
Wrong setup.

Make sure you direct antenna to the front of the StationBox Mikro.

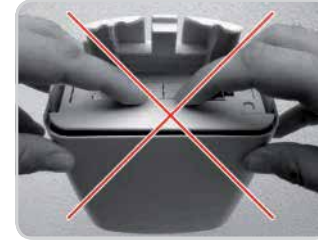


Correct push.

When locking the Base Panel, push on the both side-locks simultaneously. Alternatively, you can push on the middle part of the Base Panel surrounding the Bottom Cover Lock. Do not push the Base Panel in the area of ports!



Correct push.



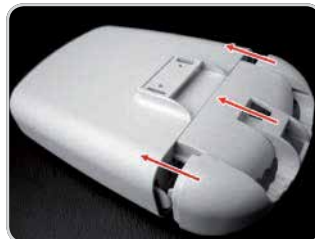
Incorrect Push.

STEP 2 Close the Bottom Cover

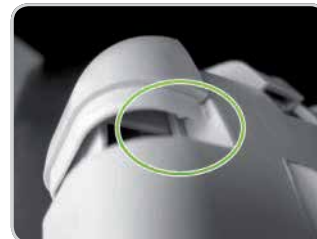
Make sure you connected all cables and opened enough premolded positions in the Bottom Cover to lead cables from the closed device. Make sure the Bottom Cover is sliding in the premolded rails.



Bottom Cover cable positions



Slide the bottom cover to the Top cover.



Correct fit – Bottom Cover.



Correct Push.



Bottom Cover Locked.

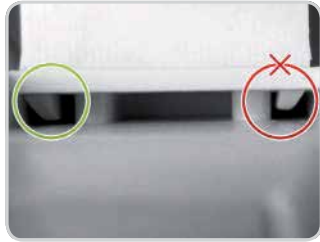
4 How To Attach Holder

No rocket science at all



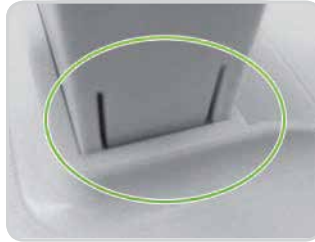
Push-and-Click the Holder.

Push-and-Click the Holder in the premolded position on the Top Cover. Make sure You hear 'click!' sound.



Left Lock - Correct, Right Lock - Wrong.

You can visually check if both parts of the lock went through.



Correct fit.



Incorrect fit.



NanoBracket®+ StationBox® Mikro.
We recommend NanoBracket Universal
to achieve excellent mounting capability.

www.nanobacket.info